

polylac

*excellent
scratch resistance*



Exclusive / Ecological / Resistant

 **TATARI**
P A N N E L



by  **gizir**
WOOD PRODUCTS



Worldwide
in over
80
countries



Reliability

Reliability is the overall brand promise at Gizir. In fact, it is our most important commitment to our customers.



Quality

We, at Gizir, strive to provide our customers with products and service that meet and even exceed their expectations.



Design

We are always inspired from nature while creating new materials.

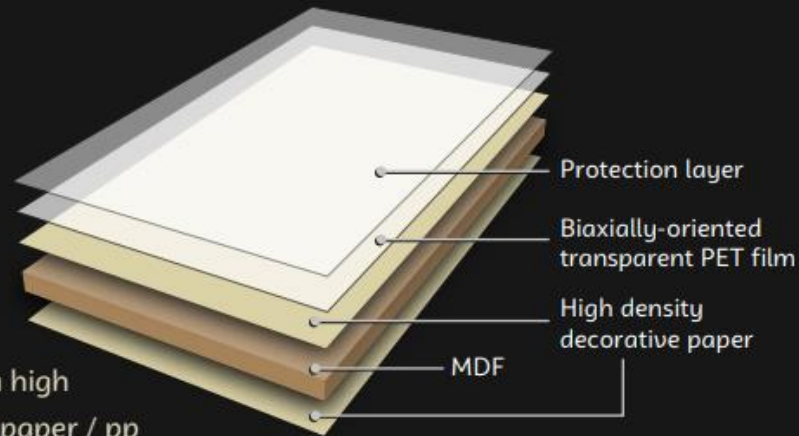
What is *polylac* ?

Polylac is an ecological multi-layered decorative panel with the "highest scratch, stain, heat, and chemical resistance" on the market.

It also has the highest gloss level with a "99GU" gloss rating.

Still achieving a "3.0 Newton (class 4B)" scratch resistance rating.

Six times the scratch resistance of some acrylics in the industry!



Polylac panel is made by pressing a high density decorative paper / pp to MDF. A specially developed biaxially-oriented transparent PET film is then laminated on the surface to protect it from external factors.

TATARI P A N N E L

High gloss with
mirror-like reflection



Excellent
scratch resistance

Smooth surface
& depth effect



Features

- **High gloss** with mirror like finish
- **Scratch**, stain & heat resistant
- **Smooth surface** and depth effect
- Cuts **without cracking** or chipping
- **100% PVC free**
- Very **easy to clean** and maintain
- **Elegant** European designs
- **Matching** acrylic and ABS edge tape
- **Two-toned** brushed aluminum with color edge tape

Where to use



kitchen



bathroom



living room



bedroom



hotel furniture



office furniture



cabinet door



wall panelling

Why *polylac* ?

1 In the decorative panel industry, high gloss levels are easy to achieve, however, the higher the gloss, the lower the scratch resistance.
Polylac, through extensive testing, has proved superior levels of glossiness while maintaining a very high scratch resistance.

2 Other panels might crack and chip during the manufacturing process.
Polylac, due to its flexible PET film, will not crack or chip, thus making the edge banding process simple.

3 While most of the other products deteriorate in time,
Polylac panels retain their original state without changing, cracking, or fading.

Making Polylac the ideal sustainable material for all your needs.



polylac
matte & glossy

Polylac panel dimensions (mm): 18x1220x2800 / 8x1220x2800
Matching edgbanding: Acrylic (single color / double color), ABS



polylac
matte & glossy



9132



9140



9141



9142

 **TATARI**
P A N N E L



9150



9160



9161



9162



9170



9171



9172

polylac
DIGITAL
matte & glossy

Digital Polylac panel dimensions (mm): 18x1220x2800
Matching edgebanding: Digital print edge tape



8501



8502



8503



8504



8505



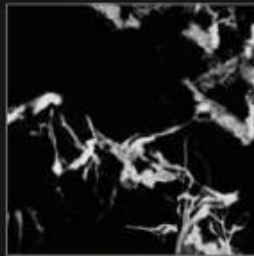
8506



8507



8508



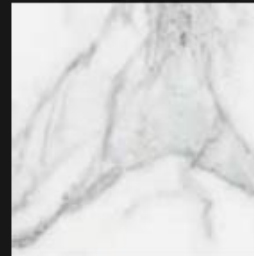
8509



8510



8511



8512



Unlimited possibilities ∞

Polylac comes in many different beautiful colors and patterns, and with Polylac's digital image capabilities, we can produce **marble, leather, wood, custom colors, logos...anything!**

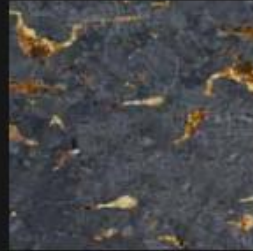
All Polylac products come with the same industry-leading gloss rating, durability, and reliability. Matte finish PET also available.

For more details: www.polylac.com.tr

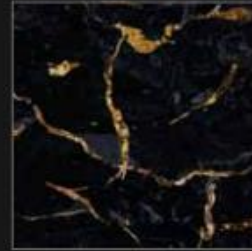
polylac
DIGITAL
matte & glossy



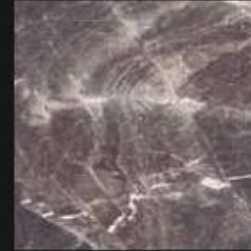
8513



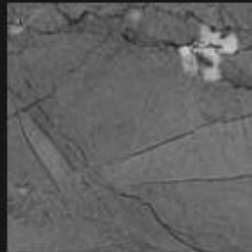
8515



8526



8517



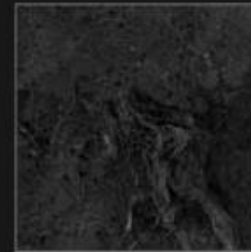
8518



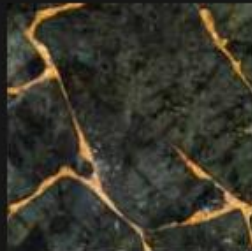
8519



8520



8521



8522



8523



8527



8528

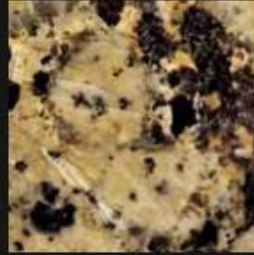
TATARI
P A N N E L

polylac
DIGITAL
matte & glossy

With our digital capabilities
"anything is possible"



8529



8530



8531



8604



8525



8524



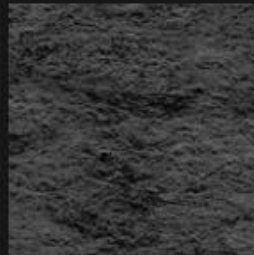
8516



8601



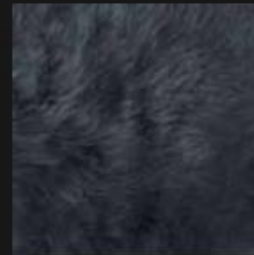
8602



8605



8606



8603



polylac
DIGITAL
matte & glossy



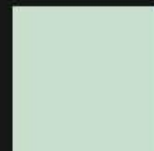
8401



8402



8404



8029



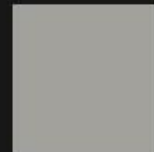
8034



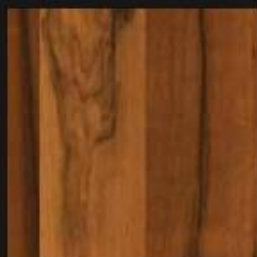
8036



8039



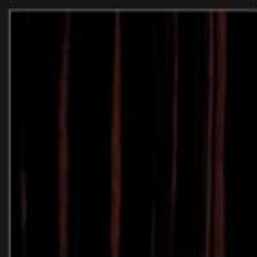
8005



8406



8407



8409



8419



8420



8421

 **TATARI**
P A N N E L



polylac

Test Results



JIS Z 2801 & ASTM G21
★ CERTIFIED! ★



No	FEATURE	RESULT	STANDARD
1	Gloss level (60° angle)	99 GU	EN 14323 part 5.13
2	Scratch resistance	3,0 Newton (Class 4B)	DIN 68861 part 4
3	Assessment of surface resistance to wet heat (100°C)	5 (No change)	EN 12721:09
4	Assessment of surface resistance to dry heat (140°C)	5 (No change)	EN 12722:09
5	Surface abrasion resistance	4500 rev. (Class 4)	EN 14323 cls. 5.9
6	Behavior towards impact loading by falling steel ball	No cracking	EN 14323 cls. 5.14
7	Test of water steam resistance	5 (No change)	EN 14323 cls. 5.11
8	Resistance to staining	5 (No change)	EN 14323 cls. 5,6
9	Assessment of surface resistance to chemical cold liquids (Acetic acid, acetone, ammonia solution, citric acid, cleaning agent, etc.)	5 (No change)	EN 12720:10
10	Colorfastness to light	4 / 5, Grade	EN 15187
11	Bending strength (*)	32 N / mm ²	EN 310
12	Modulus of elasticity in bending (*)	4441 N / mm ²	EN 310
13	Surface soundness (tensile strength) (*)	1,36 N / mm ²	EN 311
14	Tensile strength vertical to the surface (*)	0,54 N / mm ²	EN 319
15	Thickness tolerance	± 0,5 mm	Gizir
16	Bow tolerance	3,5 mm / m	Gizir
17	Cold check (40 cycles, 1 h 60°C, 15 min. room temp., 1 h - 30°C, 15 min. room temp.)	No damage	TSE
18	Antimicrobial Products – Test for Antimicrobial Activity and Efficacy	E.coli / Sa.aureus ≥2 (suitable)	JIS Z 2801
19	Standard Practice for Determining Resistance of Synthetic Polymeric Materials to Fungi	0 growth at 7, 14, 21 and 28 days (suitable)	ASTM G21

- (*) These values are weighted average of the test results.



Mall Of Arabia, 26 of July Corridor The Greek
Company, 06 Gate 9, Giza Governorate 12511

info@tatari-panel.com
www.Tatari-panel.com

Tel: +20 111 320 9777

